

Flatbed and portal units

isel® France Des composants aux Systèmes

BP 41 - ZAC de la prévôté - 4 rue des côtes d'Orval - F-78550 - HOUDAN
tel: +33(0) 130 461 201 fax: +33(0) 130 596 932 email: info@isel.fr



Flat bed unit with Z axis



Portal unit with Z axis

General note

Flatbed units as defined in the machine guideline are incomplete machines according to the modular system with processing paths of 250 to 1250 mm. Step motors (MS200HT), set for no-play, are used as spindle drives. Recirculating ball drives with a repeatability of ± 0.02 mm (positioning reproducibility) are used.

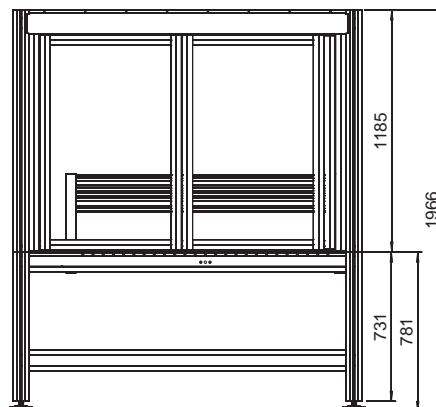
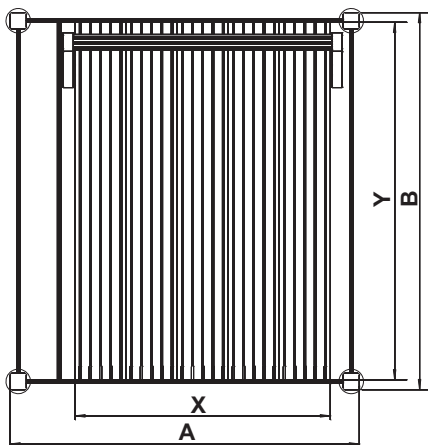
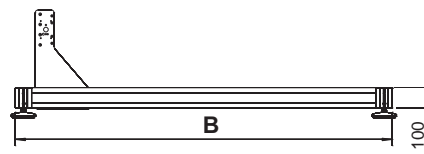
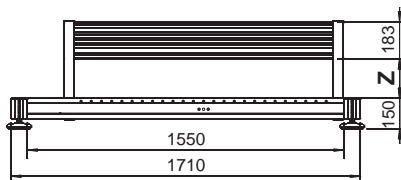
The linear guides used are the isel double track feeds, proven over many years, with no-play pre-stressed linear ball bearings and recirculating ball spindles with a repeatability of ± 0.02 mm.

All units are equipped with two limit switches per spindle.

The machining and positioning units are available in a number of versions and are characterised by smooth running and high process speeds. The use of high quality aluminium components with flat-milled surfaces achieves low weight and high accuracy.

isel X/Y/Z units are the ideal basis for setting up machines and systems for fitting and assembling, pressing and engraving, drilling and milling, milling and screwing, shaping and modelling, bonding and casting, soldering and welding, measuring and checking, sawing and cutting, etc..

Dimensioned drawings



Flatbed and portal units

X/Y flatbed units FB2

Part no.	Chassis A × B (mm)	Clamping surface X × Y (mm)	Process path (mm)	Z-Through- put (mm)
246203	1210 x 946	750 x 850	500 x 530	190
246203 2040	1210 x 1196	750 x 1100	750 x 530	
246203 2054	1210 x 1446	750 x 1350	1000 x 530	
246203 2067	1460 x 1446	1000 x 1350	850 x 780	
246203 2130	1710 x 1846	1250 x 1750	1250 x 1030	

All flatbed units are fitted with **16 × 4 mm recirculating ball drives** as standard



Z axes for flatbed units

Part no.	Lift (mm)	
230514	75	with 24V magnetic brake
230514 0400	160	with 24V magnetic brake

Sub-frames

Part no.	suitable for flatbed unit with clamping area:
248500 0027	850 x 750
248500 0040	1100 x 750
248500 0054	1350 x 750
248500 0067	1350 x 1000
248500 0130	1750 x 1250

Portal units PA2

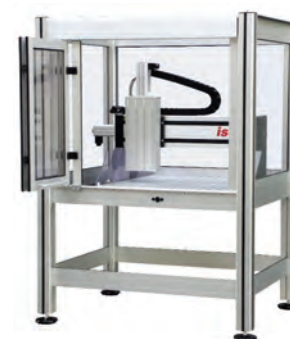
Part no.	Part no. (without motor)	Process path (mm)	Ball screw drive (mm)	Lift (mm)
242 402	242 409	280 x 490	16 x 4	75
243 402	243 409	280 x 490	16 x 4	without Z axis

Software

Part no.	
Z11 - 333 500 Z13 - 337 030	ProNC software for CAN-CNC controllers isy-CAM 2.5 Plus (only available in combination with a unit)

Options

- matched controller (e.g.: iMC-S8)
- Software modules for operation in CAM, CNC, and PLC applications
- Sub-frame
- Enclosure
- Spindle motors (see E18 *et seq.*)



Enclosures

Part no.	suitable for flatbed unit with clamping area:
248200 0000	850 x 750
248200 2040	1100 x 750
248200 2054	1350 x 750
248200 2067	1350 x 1000
248200 2130	1750 x 1250